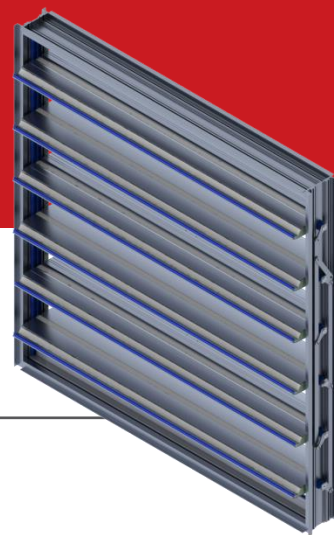


VAP-SL

EXTRUDED ALUMINUM DAMPERS WITH SIDE LINKAGE

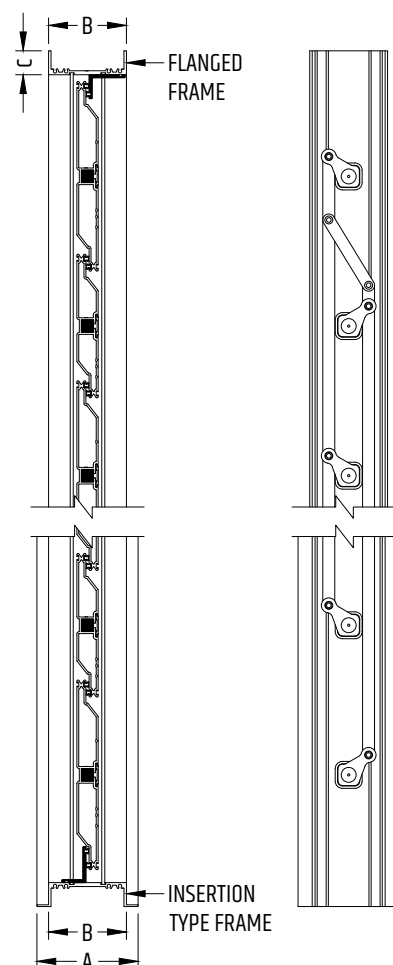


STANDARD CONSTRUCTION

MODEL VAP	SINGLE BLADE, MAX. HEIGHT OF 11-3/4" (298 MM)
	PARALLEL ACTION, MIN. HEIGHT OF 12" (305 MM)
	OPPOSED ACTION, MIN. HEIGHT OF 14" (356 MM)
FRAME	EXTRUDED ALUMINUM 6063-T6, 0.102" (2.6 MM) THICK
BLADES	EXTRUDED ALUMINUM 6063-T6, 0.08" (2 MM) THICK
DRIVE AXLE	MACHINED 1/2" X 1/2" (12.7 MM X 12.7 MM) SQUARE TO Ø 1/2" (12.7 MM) ROUND STEEL BAR, BOLTED
AXLES	1/2" X 1/2" (12.7 MM X 12.7 MM) ALUMINUM BAR, PUNCHED
FRAME SEALS	SILICONE -62 °C TO 288 °C (-80 °F TO 550 °F)
BLADE SEALS	SILICONE -62 °C TO 288 °C (-80 °F TO 550 °F)
BUSHINGS	INNER PART: CELCON (POLYMER)
	OUTER PART: POLYCARBONATE
STOPPERS	PVC
LINKAGE	SIDE (CONCEALED IN FRAME), 11 GA STAINLESS STEEL
SINGLE SECTION	MIN. : 6" (152 MM) X 6.5" (165 MM)
	MAX. : 60" (1524 MM) X 48" (1219 MM)
MULTIPLE SECTIONS	VARIOUS CONFIGURATIONS AVAILABLE INTERMEDIATE STRUCTURAL SUPPORT (BY OTHERS) IS REQUIRED FOR DAMPERS THAT CONSIST OF MORE THAN TWO 48" (1 219 MM) SECTIONS IN HEIGHT

AVAILABLE OPTIONS

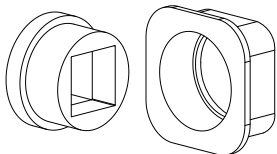
FRAME	FLANGED
ASSEMBLY	FACE AND BYPASS
	JACK SHAFT 3/4" (19 MM) - MAX. 45 FT² (4.18 M²)
BUSHINGS	BRONZE
	STAINLESS STEEL
	BALL BEARINGS
FRAME SEALS	ROUNDED STAINLESS STEEL STRIP



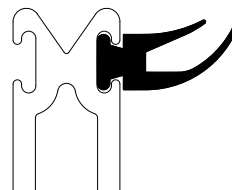
TYPE	A	B	C
INSERTION	4-1/4" (107.4 MM)	3-1/4" (82.6 MM)	1" (25.4 MM)
FLANGED	-	3-1/4" (82.6 MM)	1" (25.4 MM)

VAP-SL

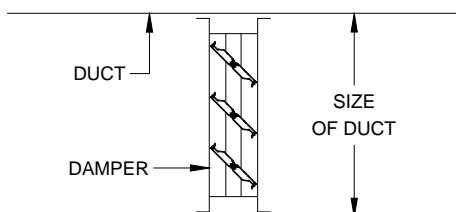
TWO-PART BUSHINGS TO AVOID METAL TO METAL CONTACT



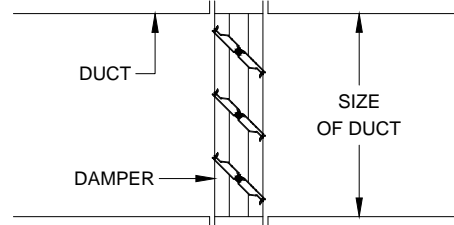
BLADE SEAL



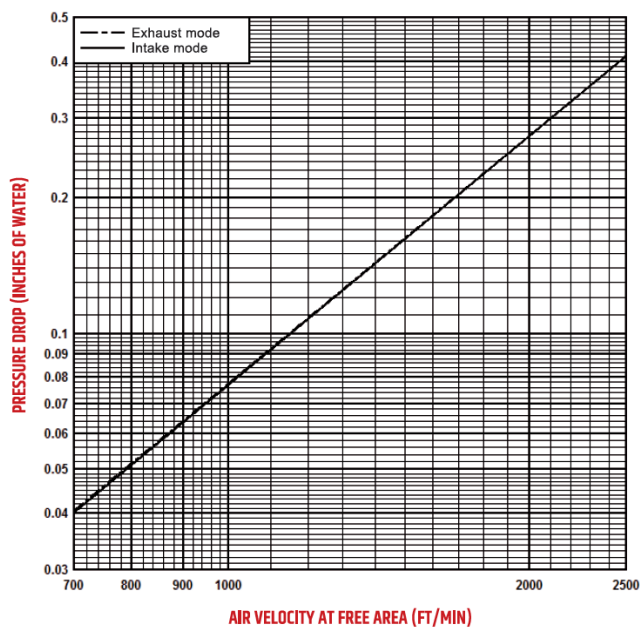
INSERTION-TYPE



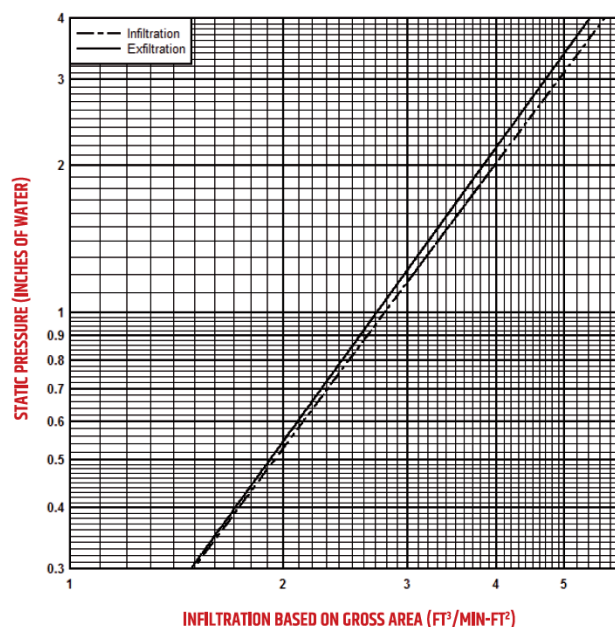
FLANGED



PRESSURE DROP VS AIR VELOCITY MODEL VAP AT 90 DEGREES



AIR LEAKAGE MODEL VAP



NOTE: Pressure drop and infiltration tests performed by Air-Ins Laboratories on a 48" x 48" damper section, in accordance with the AMCA 500 standard.

TROLEC DAMPER MAINTENANCE

When dampers are exposed to harsh worksite elements such as cement dust, it is sometimes necessary to lubricate the moving parts for maximum performance.

We recommend a penetrating lubricant such as Aerochem's MX-EP, which we use during the assembly process.

Trolec products are always carefully inspected before shipping. However, appropriate measures should be taken in the field to ensure maximum performance.

Trolec may not be held liable for any damage resulting from misuse of its products or inadequate installation.

Trolec reserves the right to modify these specifications without notice.

trolec
DAMPERS & LOUVERS

**MAKING
MASTERWORKS**

4700 Thibault Ave, Saint-Hubert (Quebec) J3Y 0A8 // ventes@trolec.com // trolec.com

T. 450.656.2610 // F. 450.486.6569

APRIL 2018