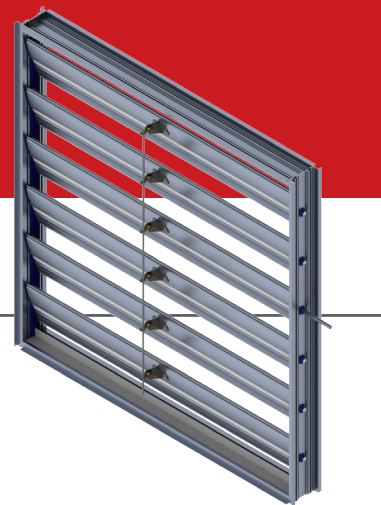


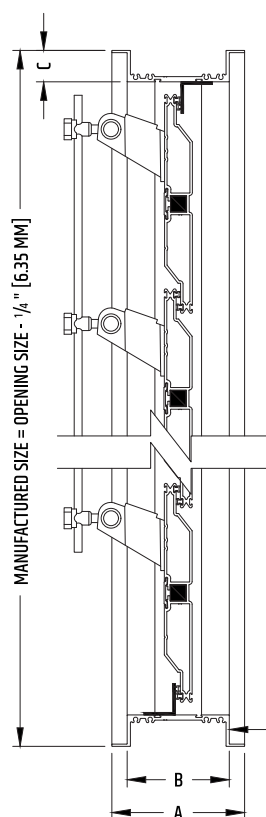
EXTRUDED ALUMINUM DAMPERS



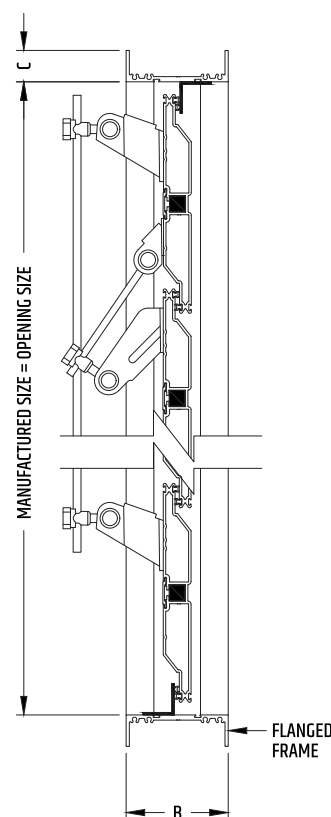
STANDARD CONSTRUCTION

MODEL VAP	SINGLE BLADE, MAX. HEIGHT OF 11-3/4" (298 MM)	
	PARALLEL ACTION, MIN. HEIGHT OF 12" (304.8 MM)	
	OPPOSED ACTION, MIN. HEIGHT OF 14" (355.6 MM)	
FRAME	EXTRUDED 6063-T6 ALUMINUM, 0.102" (2.6 MM) THICK	
BLADES	EXTRUDED 6063-T6 ALUMINUM, 0.08" (2 MM) THICK	
DRIVE AXLE	MACHINED 1/2" X 1/2" (12.7 MM X 12.7 MM) SQUARE TO Ø 1/2" (12.7 MM), ROUND STEEL BAR, BOLTED	
AXLES	1/2" X 1/2" (12.7 MM X 12.7 MM) ALUMINUM BAR, PUNCHED	
FRAME SEALS	SILICONE -62 °C TO 288 °C (-80 °F TO 550 °F)	
BLADE SEALS	SILICONE -62 °C TO 288 °C (-80 °F TO 550 °F)	
BUSHINGS	INNER PART: CELCON (POLYMER)	
	OUTER PART: POLYCARBONATE	
STOPPERS	PVC	
HARDWARE	YELLOW ZINC PLATED	
WIDTH	MIN. 6" (152 MM)	MAX. 60" (1 524 MM)
HEIGHT	SINGLE BLADE	
	FLANGED FRAME	INSERTION-TYPE FRAME
	MIN. 6-1/2" (165 MM) MAX. 9-3/4" (248 MM)	MIN. 6-1/2" (165 MM) MAX. 11-3/4" (298 MM)
	MULTIPLE BLADES	
	MIN. 12" (305 MM)	MAX. 48" (1 219 MM)

PARALLEL ACTION



OPPOSED ACTION



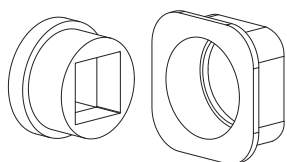
AVAILABLE OPTIONS

FRAME	FLANGED
BUSHINGS	BRONZE
	STAINLESS STEEL
	BALL BEARINGS
ASSEMBLY	FACE AND BYPASS
	JACK SHAFT 3/4" (19 MM) - MAX. 45 FT² (4.18 M²)
FRAME SEALS	ROUNDED STAINLESS STEEL STRIP

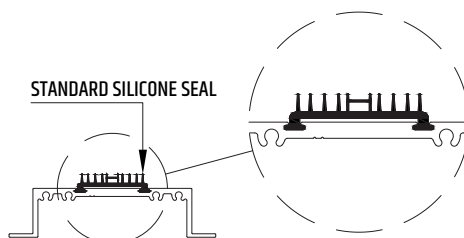
TYPE

		A	B	C
INSERTION	Up to 30" x 30" (762 MM X 762 MM)	3-1/8" (79.1 MM)	2-5/16" (58.3 MM)	1" (25.4 MM)
	Greater than 30" x 30" (762 MM X 762 MM)	4-1/4" (107.4 MM)	3-1/4" (82.6 MM)	1" (25.4 MM)
FLANGED	Up to 30" x 30" (762 MM X 762 MM)	—	2-5/16" (58.3 MM)	1" (25.4 MM)
	Greater than 30" x 30" (762 MM X 762 MM)	—	3-1/4" (82.6 MM)	1" (25.4 MM)

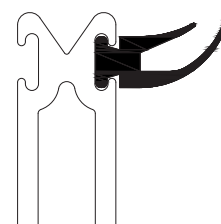
TWO-PART BUSHINGS TO AVOID METAL TO METAL CONTACT



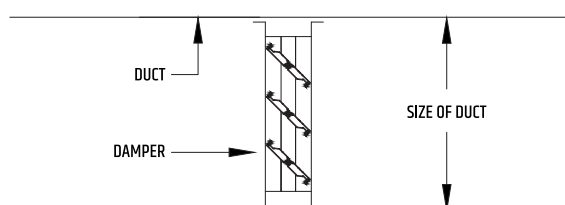
FRAME SEAL



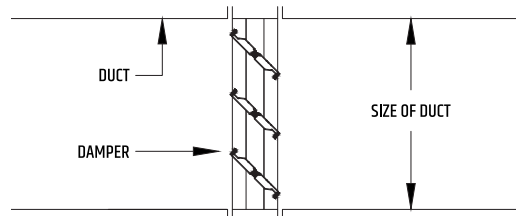
BLADE SEAL



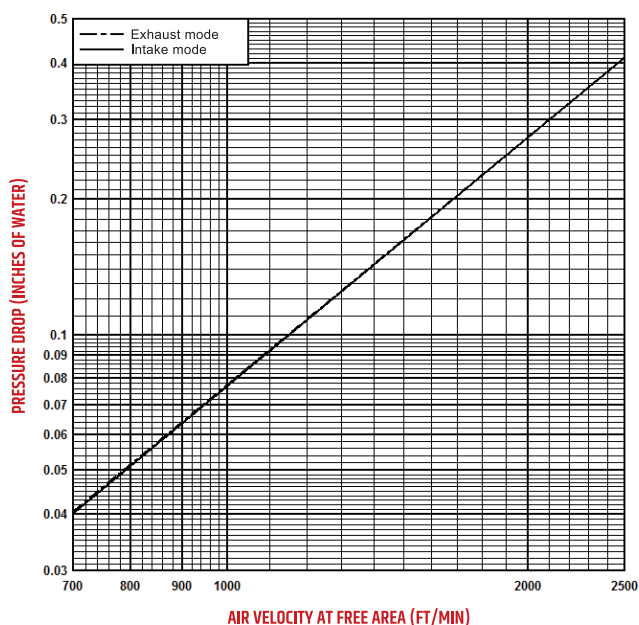
INSERTION-TYPE



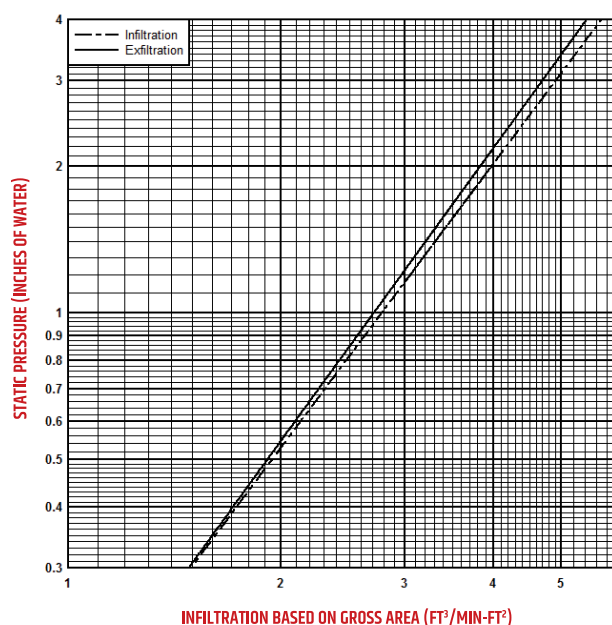
FLANGED



PRESSURE DROP VS AIR VELOCITY MODEL VAP AT 90 DEGREES



AIR LEAKAGE MODEL VAP



NOTE: Pressure drop and infiltration tests performed by Air-Ins Laboratories on a 48" x 48" damper section, in accordance with the AMCA 500 standard.

TROLEC DAMPER MAINTENANCE

When dampers are exposed to harsh worksite elements such as cement dust, it is sometimes necessary to lubricate the moving parts for maximum performance.

We recommend a penetrating lubricant such as Aerochem's MX-EP, which we use during the assembly process.

Trolec products are always carefully inspected before shipping. However, appropriate measures should be taken in the field to ensure maximum performance.

Trolec may not be held liable for any damage resulting from misuse of its products or inadequate installation.

Trolec reserves the right to modify these specifications without notice.