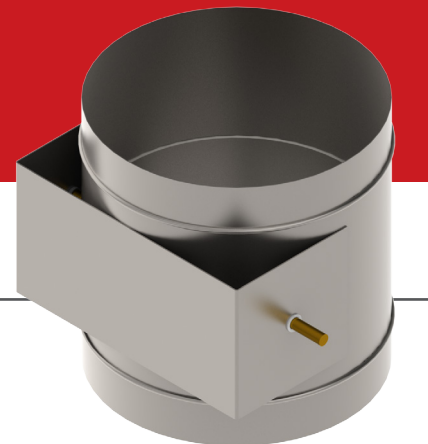


ROUND BACKDRAFT DAMPERS



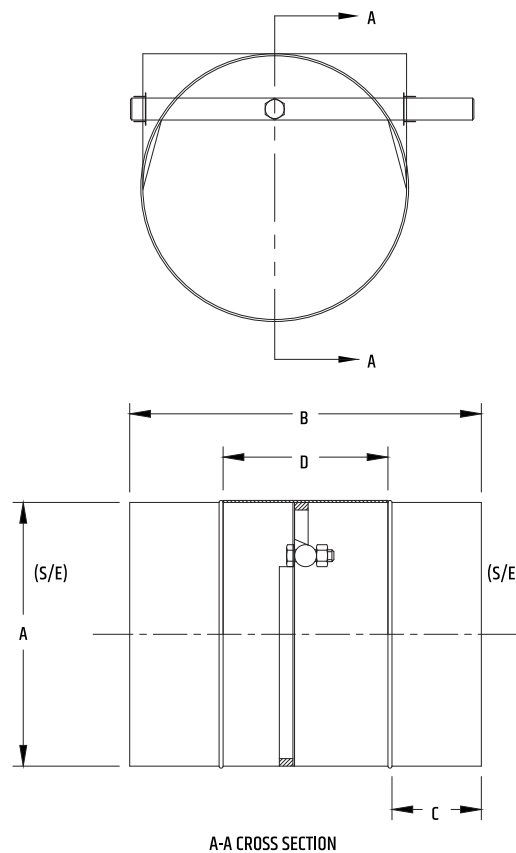
STANDARD CONSTRUCTION

FRAME	20 GA GALVANIZED STEEL
BLADE	16 GA GALVANIZED STEEL
BUSHING	DELRI ^N (POLYMER)
AXLE	STEEL Ø 1/2" (12.7 MM)
STOPPERS	SELF-ADHESIVE NEOPRENE (ACRYLIC GLUE) 3/8" X 5/8" (9.5 MM X 16 MM)
COUNTERWEIGHT	ON CONTROL ARM

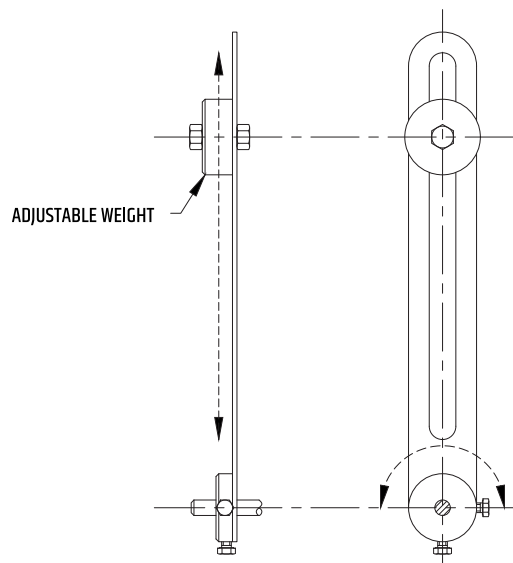
AVAILABLE OPTIONS

FRAME	STAINLESS STEEL
	14 GA ALUMINUM
BLADE	STAINLESS STEEL
	14 GA ALUMINUM
FINISH	LECHLER ISOLACK PAINT (5-YEAR WARRANTY)
BUSHING	BRONZE
INSULATION	ARMAFLEX 3/16" (4.8 MM) (ACRYLIC GLUE) - INT./EXT. BLADE

TYPE	A DIAMETER (S/E)	B LENGTH	C	D
VVA-RB	4" (101.6 MM)	8" (203.2 MM)	2" (50.8 MM)	3-3/4" (95.3 MM)
	5" (127 MM)			
	6" (152.4 MM)			
	7" (177.8 MM)			
	8" (203.2 MM)			
	9" (228.6 MM)			
	10" (254 MM)			
	12" (304.8 MM)			
	14" (355.6 MM)			
	16" (406.4 MM)			



VVA-RB COUNTERWEIGHT



TROLEC DAMPER MAINTENANCE

When dampers are exposed to harsh worksite elements such as cement dust, it is sometimes necessary to lubricate the moving parts for maximum performance.

We recommend a penetrating lubricant such as Aerochem's MX-EP, which we use during the assembly process.

Trolec products are always carefully inspected before shipping. However, appropriate measures should be taken in the field to ensure maximum performance.

Trolec may not be held liable for any damage resulting from misuse of its products or inadequate installation.

Trolec reserves the right to modify these specifications without notice.