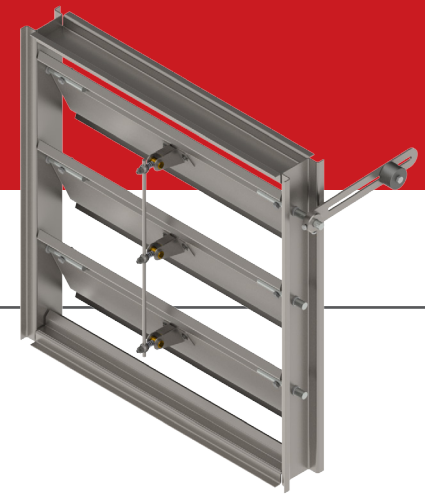


# VAR-3

## BAROMETRIC DAMPERS



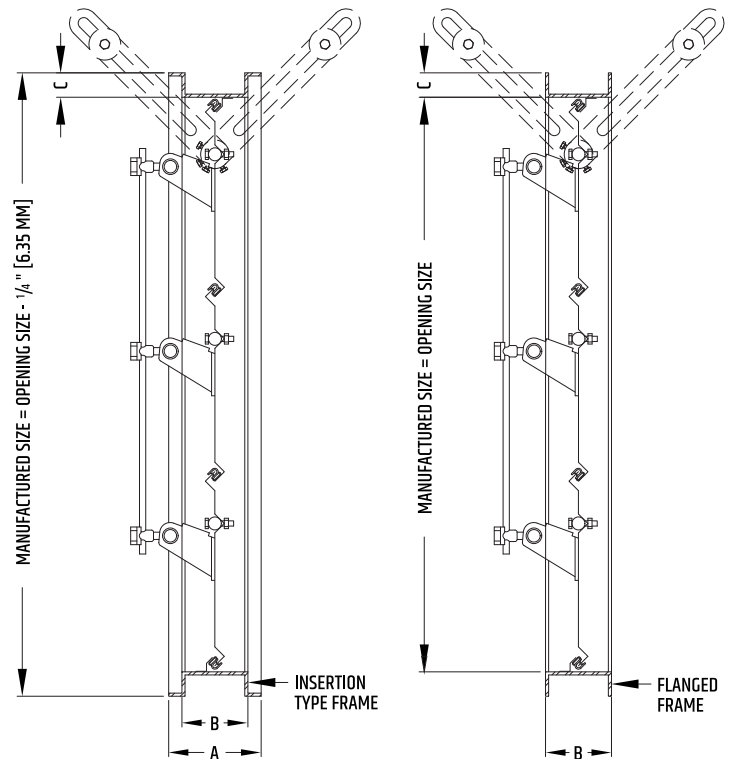
VAR-3

### STANDARD CONSTRUCTION

MODEL VAR-3	MIN. HEIGHT 16" (406.4 MM)	
FRAME	16 GA GALVANIZED STEEL	
BLADES	16 GA GALVANIZED STEEL	MAX. 2400 PPM
DRIVE AXLE	Ø 1/2" (12.7 MM) COLD ROLLED STEEL - ZINC PLATED	
AXLES	Ø 1/2" (12.7 MM) BOLTED SLIDING SWIVEL	
BLADE SEALS	EXTRUDED E.P.D.M. MOULDINGS	
BUSHINGS	DELRIN (POLYMER) PERMANENT LUBRICATION	
COUNTERWEIGHT	LOCATED ON CONTROL ARM OR ON BLADES	
HARDWARE	YELLOW ZINC PLATED	
WIDTH	MIN. 6" (152 MM)	MAX. 48" (1 219 MM)
HEIGHT	MIN. 16" (406.4 MM)	MAX. 48" (1 219 MM)

### AVAILABLE OPTIONS

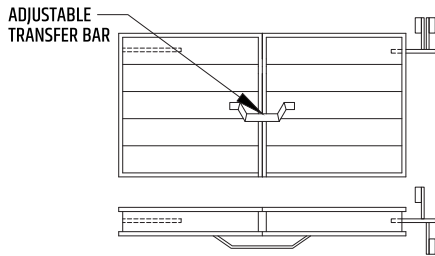
FRAME	FLANGED	
BLADES	14 GA	
	12 GA	
BUSHINGS	BRONZE	
	STAINLESS STEEL	
	BALL BEARINGS	
FRAME SEALS	STAINLESS STEEL	
INSULATION	ARMAFLEX 3/16" (4.8 MM) (ACRYLIC GLUE) - INT./EXT. BLADE	
FINISH	LECHLER ISOLACK (5-YEAR WARRANTY)	



TYPE	A	B	C
INSERTION	4-1/4" (108 MM)	3-1/4" (82.6 MM)	1" (25.4 MM)
FLANGED	-	3-1/4" (82.6 MM)	1" (25.4 MM)

# VAR-3

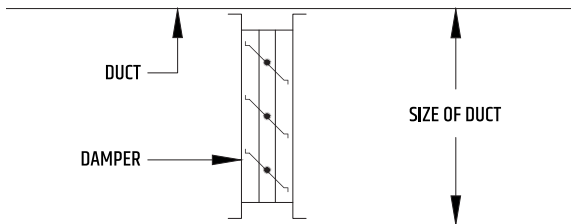
## MULTIPLE SECTIONS MAXIMUM 20 FT<sup>2</sup>



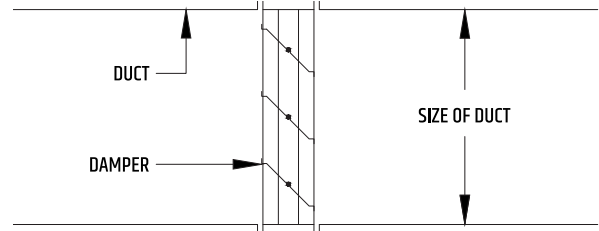
## BLADE SEAL RIGID AND SEMI-RIGID EXTRUDED E.P.D.M. MOULDING



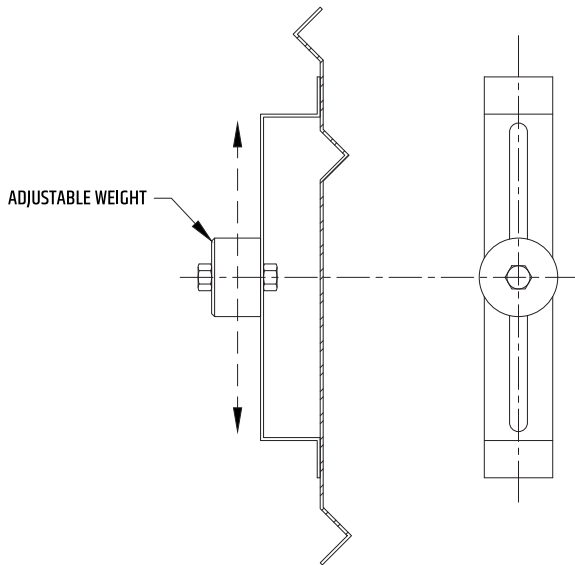
## INSERTION-TYPE



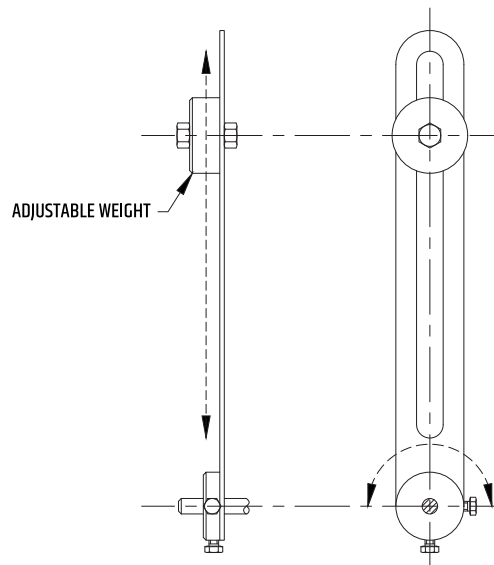
## FLANGED



## OPTION COUNTERWEIGHT SYSTEM



## WEIGHTS SHOULD BE INSTALLED ON MAIN BLADE AND ADJUSTED ACCORDINGLY



## TROLEC DAMPER MAINTENANCE

When dampers are exposed to harsh worksite elements such as cement dust, it is sometimes necessary to lubricate the moving parts for maximum performance.

We recommend a penetrating lubricant such as Aerochem's MX-EP, which we use during the assembly process.

Trolec products are always carefully inspected before shipping. However, appropriate measures should be taken in the field to ensure maximum performance.

Trolec may not be held liable for any damage resulting from misuse of its products or inadequate installation.

Trolec reserves the right to modify these specifications without notice.