

V90-MB-I-SS-SL

STAINLESS STEEL DAMPERS WITH INSULATED BLADES AND SIDE LINKAGE

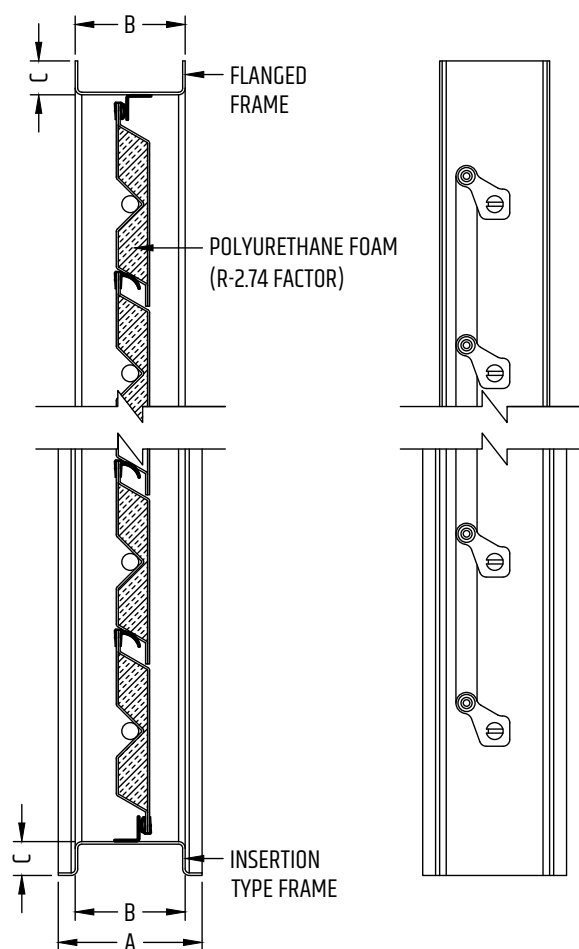


STANDARD CONSTRUCTION

MODEL V90-MB-I-SS-SL-P	PARALLEL ACTION, MIN. HEIGHT OF 10" (254 MM)	
MODEL V90-MB-I-SS-SL-O	OPPOSED ACTION, MIN. HEIGHT OF 10" (254 MM)	
FRAME	16 GA, 316-2B STAINLESS STEEL	
BLADES	16 GA, 316-2B STAINLESS STEEL	
DRIVE AXLE	Ø 1/2" (12.7 MM) STAINLESS STEEL, BOLTED	
AXLES	Ø 1/2" (12.7 MM) STAINLESS STEEL, BOLTED	
FRAME SEALS	STAINLESS STEEL	
BLADE SEALS	E.P.D.M. RUBBER	
BLADE INSULATION	POLYURETHANE FOAM (R-2.74 FACTOR)	
BUSHINGS	STAINLESS STEEL	
STOPPERS	STAINLESS STEEL	
LINKAGE	SIDE (CONCEALED IN FRAME), 11 GA STAINLESS STEEL	
WIDTH	MIN. 6" (152 MM)	MAX. 54" (1 372 MM)
HEIGHT	MIN. 10" (254 MM)	MAX. 48" (1 219 MM)

AVAILABLE OPTIONS

FRAME	FLANGED
BLADES	14 GA STAINLESS STEEL
	12 GA STAINLESS STEEL
BUSHINGS	BRONZE
	DELIN (POLYMER)
	BALL BEARINGS
ASSEMBLY	FACE AND BYPASS
	PAINT-TREATED STEEL JACK SHAFT 3/4" (19 MM) - MAX. 45 FT² (4.18 M²)

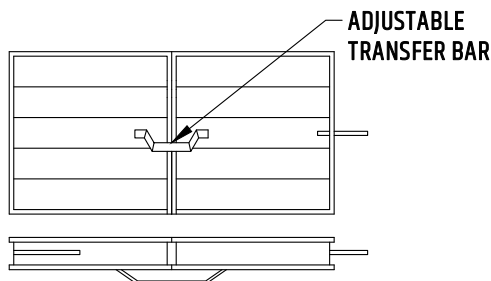


TYPE OF ACTION	HEIGHT	A	B	C
OPPOSED	≤ 14-7/8" (377.8 MM)	4-1/4" (108 MM)	3-1/4" (82.6 MM)	5/8" (16 MM)
	≥ 15" (381 MM)	4-1/4" (108 MM)	3-1/4" (82.6 MM)	1" (25.4 MM)
PARALLEL	≤ 12-5/8" (320.7 MM)	4-1/4" (108 MM)	3-1/4" (82.6 MM)	5/8" (16 MM)
	≥ 12-3/4" (324 MM)	4-1/4" (108 MM)	3-1/4" (82.6 MM)	1" (25.4 MM)

V90-MB-I-SS-SL

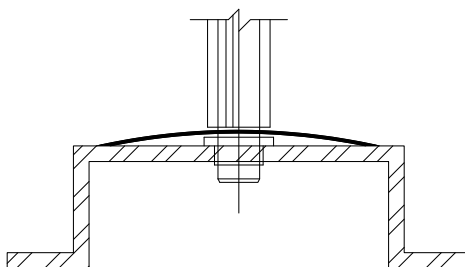
MULTIPLE SECTIONS

MAXIMUM 20 FT²



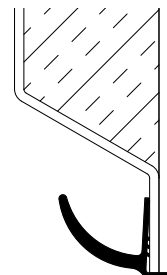
FRAME SEAL

ROUNDED STAINLESS STEEL STRIP

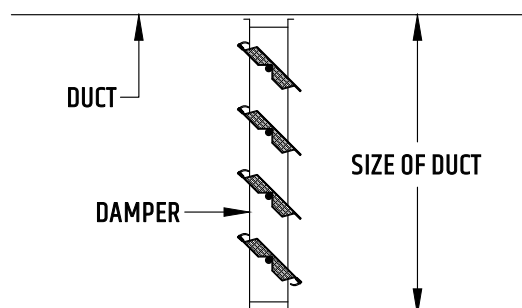


BLADE SEAL

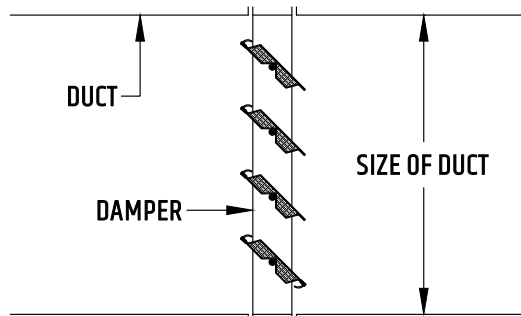
RIGID AND SEMI-RIGID EXTRUDED E.P.D.M. MOULDING



INSERTION-TYPE



FLANGED



TROLEC DAMPER MAINTENANCE

When dampers are exposed to harsh worksite elements such as cement dust, it is sometimes necessary to lubricate the moving parts for maximum performance.

We recommend a penetrating lubricant such as Aerochem's MX-EP, which we use during the assembly process.

Trolec products are always carefully inspected before shipping. However, appropriate measures should be taken in the field to ensure maximum performance.

Trolec may not be held liable for any damage resulting from misuse of its products or inadequate installation.

Trolec reserves the right to modify these specifications without notice.

trolec
DAMPERS & LOUVERS

**MAKING
MASTERWORKS**

4700 Thibault Ave, Saint-Hubert (Quebec) J3Y 0A8 // ventes@trolec.com // trolec.com

T. 450.656.2610 // F. 450.486.6569

APRIL 2018