

V90-MB-SS

STAINLESS STEEL DAMPERS



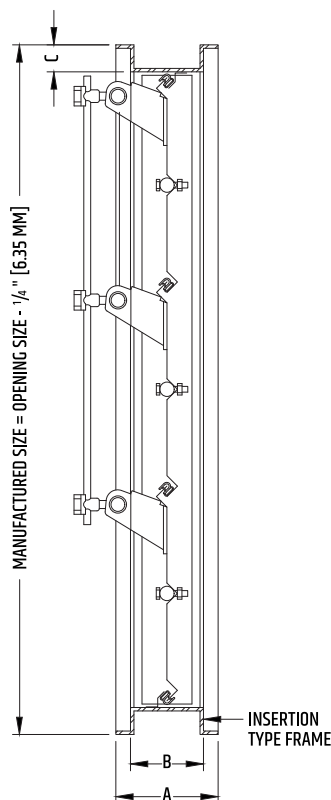
STANDARD CONSTRUCTION

MODEL V90-MB-SS-P	PARALLEL ACTION, MIN. HEIGHT OF 10" (254 MM)	
MODEL V90-MB-SS-O	OPPOSED ACTION, MIN. HEIGHT OF 10" (254 MM)	
FRAME	16 GA, 316-2B STAINLESS STEEL	
BLADES	16 GA, 316-2B STAINLESS STEEL	
DRIVE AXLE	Ø 1/2" (12.7 MM) STAINLESS STEEL, BOLTED	
AXLES	Ø 1/2" (12.7 MM) STAINLESS STEEL, BOLTED	
FRAME SEALS	STAINLESS STEEL	
BLADE SEALS	E.P.D.M. RUBBER	
BUSHINGS	STAINLESS STEEL	
STOPPERS	STAINLESS STEEL	
HARDWARE	STAINLESS STEEL	
WIDTH	MIN. 6" (152 MM)	MAX. 54" (1 372 MM)
HEIGHT	MIN. 10" (254 MM)	MAX. 48" (1 219 MM)

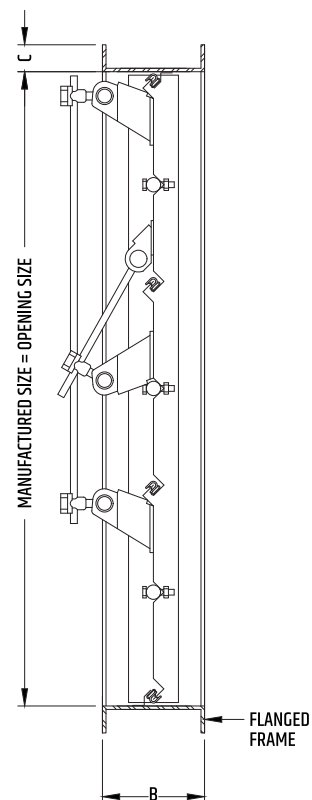
AVAILABLE OPTIONS

FRAME	FLANGED
BLADES	14 GA STAINLESS STEEL
	12 GA STAINLESS STEEL
BUSHINGS	BRONZE
	DELIN (POLYMER)
	BALL BEARINGS
INSULATION	ARMAFLEX 3/16" (4.8 MM) (ACRYLIC GLUE) - INT./EXT. BLADE
ASSEMBLY	FACE AND BYPASS
	PAINT-TREATED STEEL JACK SHAFT 3/4" (19 MM) - MAX. 45 FT² (4.18 M²)

V90-MB-SS-P
PARALLEL ACTION



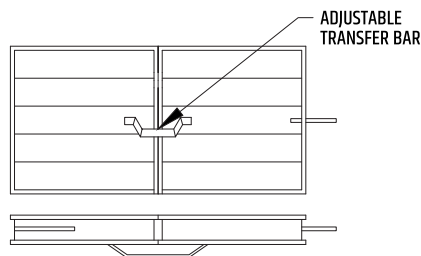
V90-MB-SS-O
OPPOSED ACTION



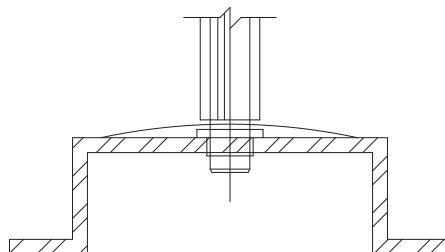
TYPE OF ACTION	HEIGHT	A	B	C
OPPOSED	≤ 14-7/8" (377.8 MM)	4-1/4" (108 MM)	3-1/4" (82.6 MM)	5/8" (16 MM)
	≥ 15" (381 MM)	4-1/4" (108 MM)	3-1/4" (82.6 MM)	1" (25.4 MM)
PARALLEL	≤ 12-5/8" (320.7 MM)	4-1/4" (108 MM)	3-1/4" (82.6 MM)	5/8" (16 MM)
	≥ 12-3/4" (324 MM)	4-1/4" (108 MM)	3-1/4" (82.6 MM)	1" (25.4 MM)

V90-MB-SS

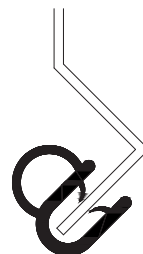
**MULTIPLE SECTIONS
MAXIMUM 20 FT²**



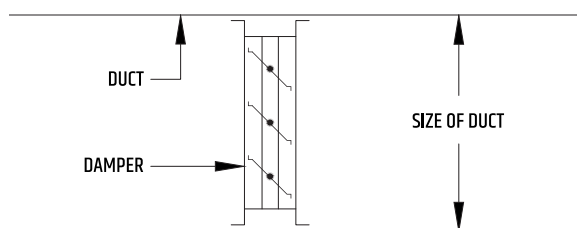
**FRAME SEAL
ROUNDED STAINLESS STEEL STRIP**



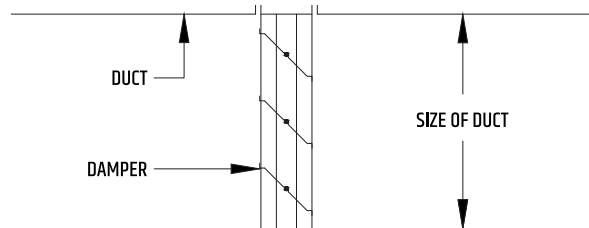
**BLADE SEAL
RIGID AND SEMI-RIGID EXTRUDED E.P.D.M. MOULDING**



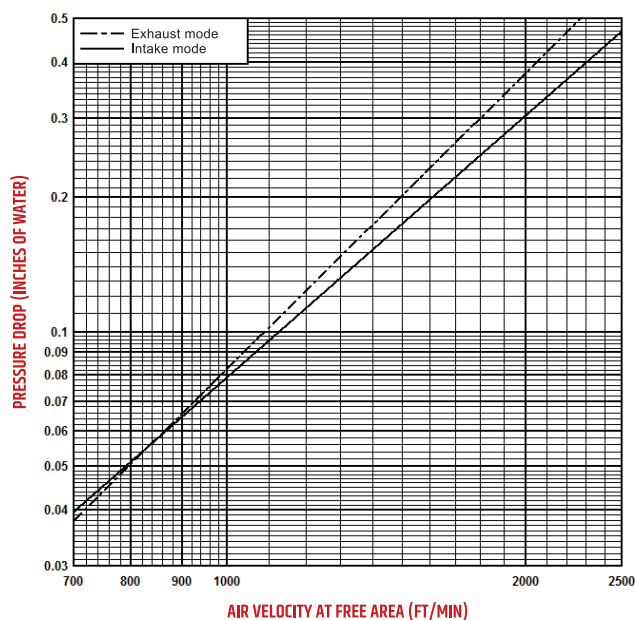
INSERTION-TYPE



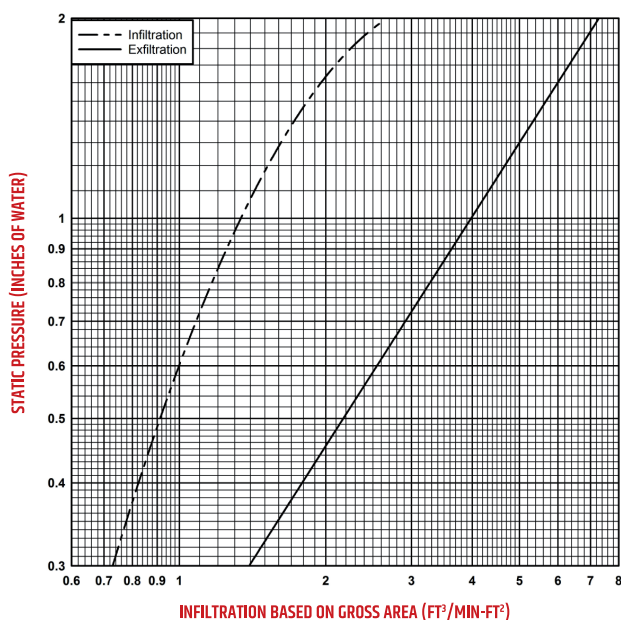
FLANGED



**PRESSURE DROP VS AIR VELOCITY
MODEL V90-MB AT 90 DEGREES**



**AIR LEAKAGE
MODEL V90-MB**



NOTE: Pressure drop and infiltration tests performed by Air-Ins Laboratories on a 48" x 48" damper section, in accordance with the AMCA 500 standard.

TROLEC DAMPER MAINTENANCE

When dampers are exposed to harsh worksite elements such as cement dust, it is sometimes necessary to lubricate the moving parts for maximum performance.

We recommend a penetrating lubricant such as Aerochem's MX-EP, which we use during the assembly process.

Trolec products are always carefully inspected before shipping. However, appropriate measures should be taken in the field to ensure maximum performance.

Trolec may not be held liable for any damage resulting from misuse of its products or inadequate installation.

Trolec reserves the right to modify these specifications without notice.