

V90-MB

STEEL DAMPERS



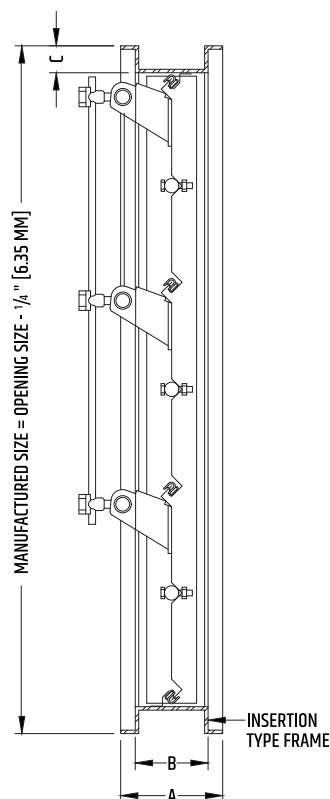
STANDARD CONSTRUCTION

MODEL V90-MB-P	PARALLEL ACTION, MIN. HEIGHT OF 10" (254 MM)	
MODEL V90-MB-O	OPPOSED ACTION, MIN. HEIGHT OF 10" (254 MM)	
FRAME	16 GA GALVANIZED STEEL	
BLADES	16 GA GALVANIZED STEEL	
DRIVE AXLE	COLD ROLLED STEEL - ZINC PLATED	
AXLES	BOLTED ZAMAK SLIDING SWIVEL Ø 1/2" (12.7 MM) OF 2-3/4" (70 MM) LONG	
FRAME SEALS	STAINLESS STEEL	
BLADE SEALS	E.P.D.M. RUBBER	
BUSHINGS	DELIRIN (POLYMER) PERMANENT LUBRICATION	
STOPPERS	STEEL	
HARDWARE	YELLOW ZINC PLATED	
WIDTH	MIN. 6" (152 MM)	MAX. 54" (1 372 MM)
HEIGHT	MIN. 10" (254 MM)	MAX. 48" (1 219 MM)

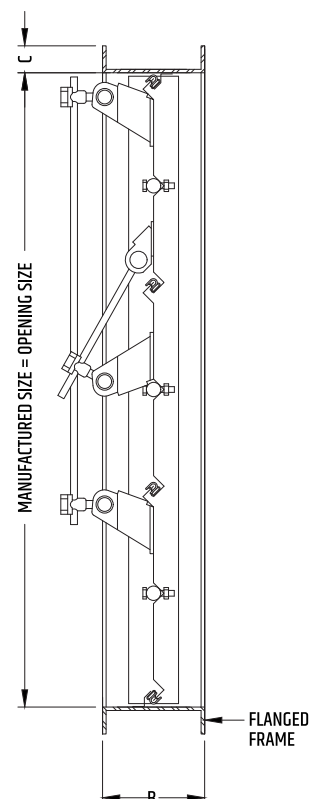
AVAILABLE OPTIONS

FRAME	FLANGED
BLADES	14 GA 12 GA
AXLES	C.R.S. STEEL
BUSHINGS	BRONZE STAINLESS STEEL BALL BEARINGS
INSULATION	ARMAFLEX 3/16" (4.8 MM) (ACRYLIC GLUE) - INT./EXT. BLADE
ASSEMBLY	FACE AND BYPASS JACK SHAFT 3/4" (19 MM) - MAX. 45 FT² (4.18 M²)
FINISH	LECHLER ISOLACK PAINT (5-YEAR WARRANTY)

V90-MB-P
PARALLEL ACTION



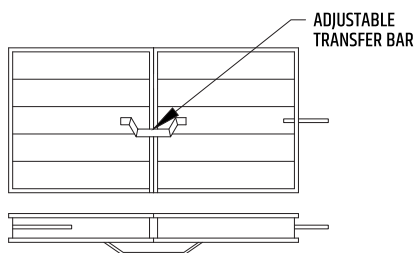
V90-MB-O
OPPOSED ACTION



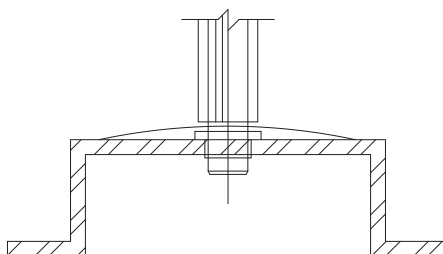
TYPE OF ACTION	HEIGHT	A	B	C
OPPOSED	≤ 14-7/8" (377.8 MM)	4-1/4" (108 MM)	3-1/4" (82.6 MM)	5/8" (16 MM)
	≥ 15" (381 MM)	4-1/4" (108 MM)	3-1/4" (82.6 MM)	1" (25.4 MM)
PARALLEL	≤ 12-5/8" (320.7 MM)	4-1/4" (108 MM)	3-1/4" (82.6 MM)	5/8" (16 MM)
	≥ 12-3/4" (324 MM)	4-1/4" (108 MM)	3-1/4" (82.6 MM)	1" (25.4 MM)

V90-MB

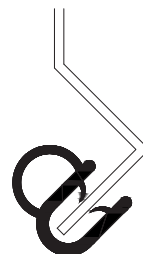
MULTIPLE SECTIONS MAXIMUM 20 FT²



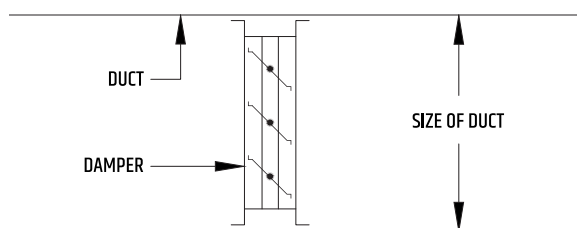
FRAME SEAL ROUNDED STAINLESS STEEL STRIP



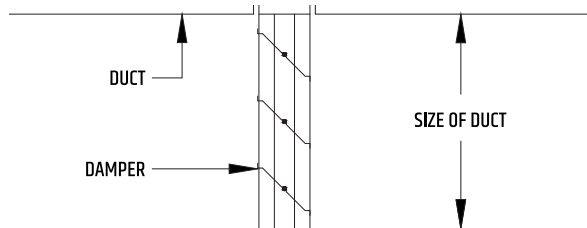
BLADE SEAL RIGID AND SEMI-RIGID EXTRUDED E.P.D.M. MOULDING



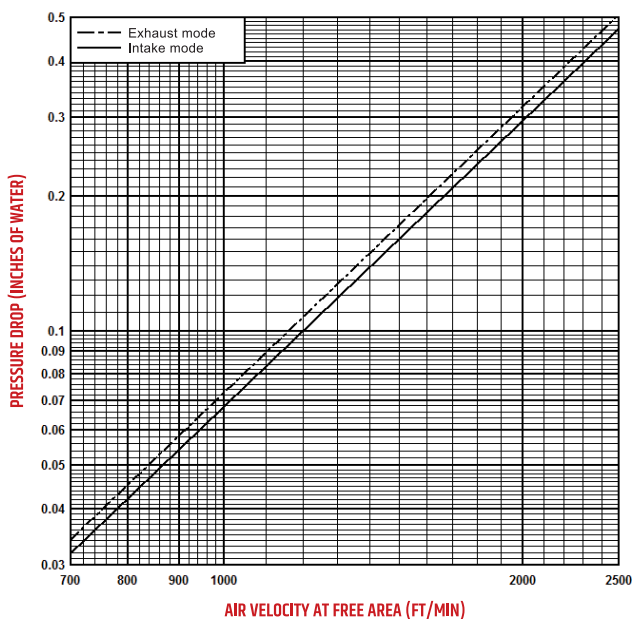
INSERTION-TYPE



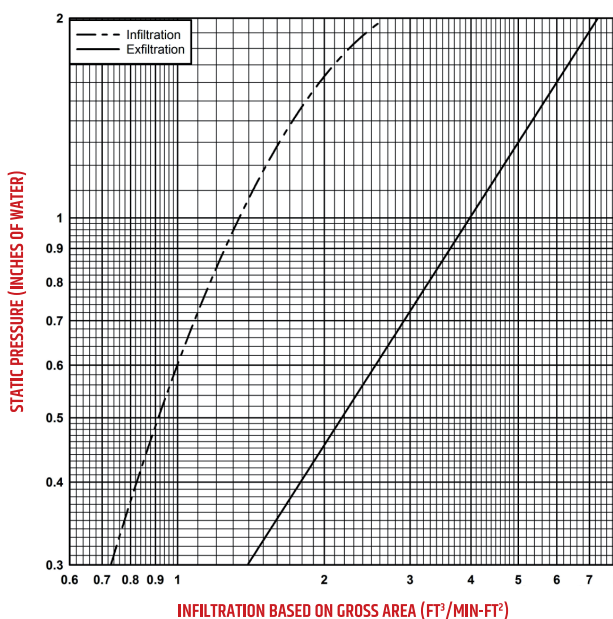
FLANGED



PRESSURE DROP VS AIR VELOCITY MODEL V90-MB AT 90 DEGREES



AIR LEAKAGE MODEL V90-MB



NOTE: Pressure drop and infiltration tests performed by Air-Ins Laboratories on a 48" x 48" damper section, in accordance with the AMCA 500 standard.

TROLEC DAMPER MAINTENANCE

When dampers are exposed to harsh worksite elements such as cement dust, it is sometimes necessary to lubricate the moving parts for maximum performance.

We recommend a penetrating lubricant such as Aerochem's MX-EP, which we use during the assembly process.

Trolec products are always carefully inspected before shipping. However, appropriate measures should be taken in the field to ensure maximum performance.

Trolec may not be held liable for any damage resulting from misuse of its products or inadequate installation.

Trolec reserves the right to modify these specifications without notice.