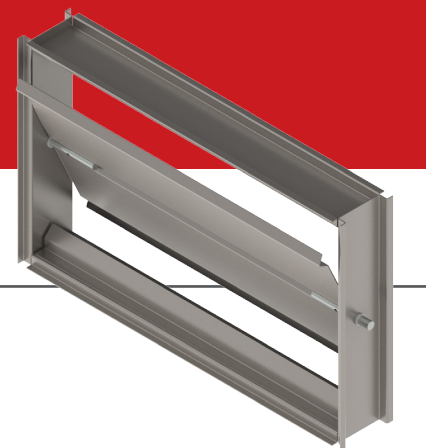


V90-SB

STEEL DAMPERS



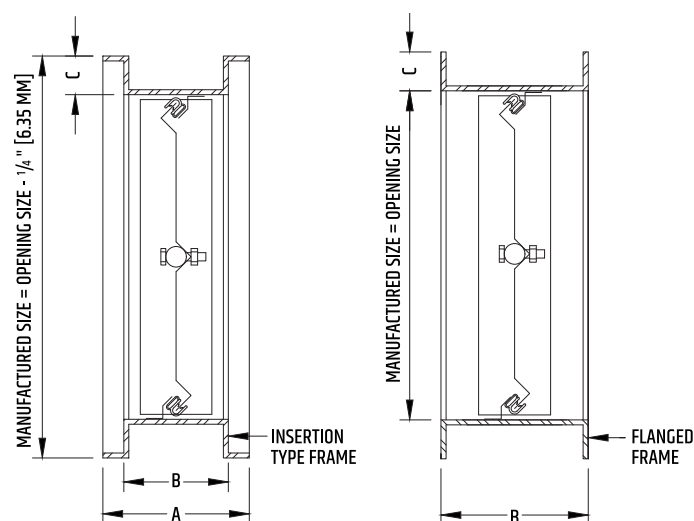
STANDARD CONSTRUCTION

MODEL V90-SB	SINGLE BLADE, MIN. HEIGHT OF 6" (152 MM)	
FRAME	16 GA GALVANIZED STEEL	
BLADE	16 GA GALVANIZED STEEL	
DRIVE AXLE	COLD ROLLED STEEL - ZINC PLATED	
AXLE	BOLTED ZAMAK SLIDING SWIVEL Ø 1/2" (12.7 MM) OF 2-3/4" (70 MM) LONG	
FRAME SEALS	STAINLESS STEEL	
BLADE SEALS	E.P.D.M. RUBBER	
BUSHINGS	DELTRIN (POLYMER) PERMANENT LUBRICATION	
STOPPERS	STEEL	
WIDTH	MIN. 6" (152 MM)	MAX. 48" (1 219 MM)
HEIGHT	MIN. 4" (101.6 MM)	MAX. 14" (356 MM)

AVAILABLE OPTIONS

FRAME	FLANGED
BLADE	14 GA 12 GA
BUSHINGS	BRONZE STAINLESS STEEL BALL BEARINGS
INSULATION	ARMAFLEX 3/16" (4.8 MM) (ACRYLIC GLUE) - INT./EXT. BLADE
FINISH	LECHLER ISOLACK PAINT (5-YEAR WARRANTY)

V90-SB SINGLE BLADE



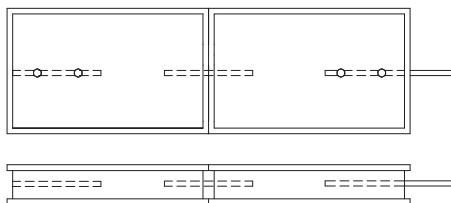
NOTE:

- > For heights < 6" (152.4 MM), the upper and lower frames are replaced with a 1/16" (1.6 MM) sheet of galvanized steel.

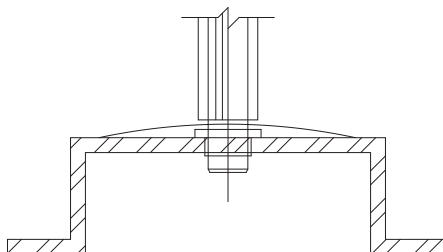
TYPE	A	B	C
INSERTION	4-1/4" (108 MM)	3-1/4" (82.6 MM)	5/8" (16 MM)
FLANGED	—	3-1/4" (82.6 MM)	5/8" (16 MM)

V90-SB

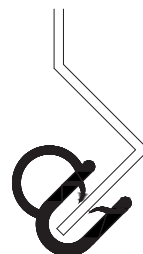
MULTIPLE SECTIONS



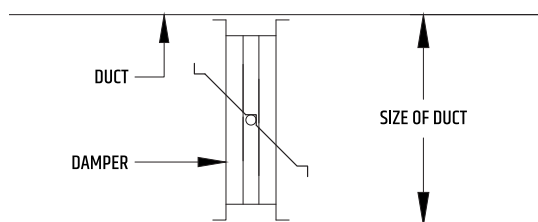
FRAME SEAL ROUNDED STAINLESS STEEL STRIP



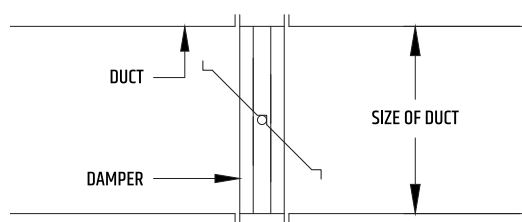
BLADE SEAL RIGID AND SEMI-RIGID EXTRUDED E.P.D.M. MOULDING



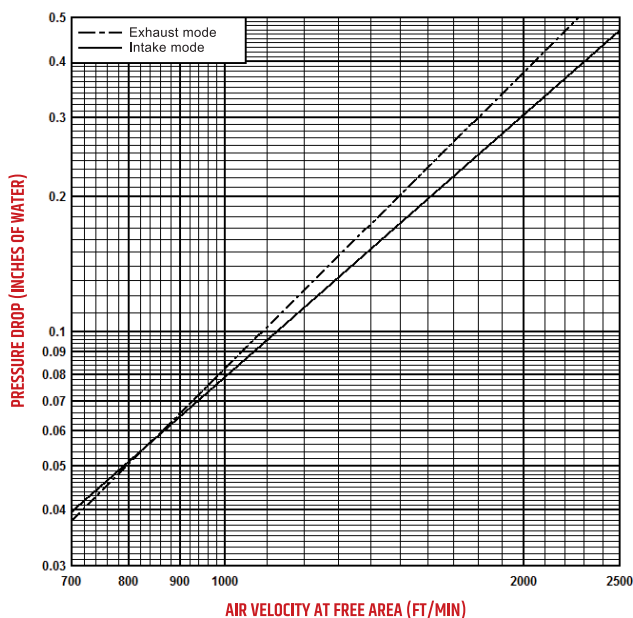
INSERTION-TYPE



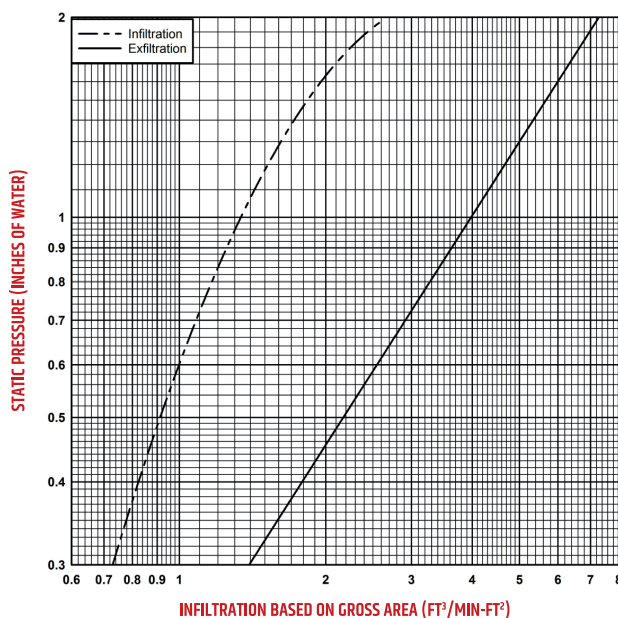
FLANGED



PRESSURE DROP VS AIR VELOCITY MODEL V90-MB AT 90 DEGREES



AIR LEAKAGE MODEL V90-MB



NOTE: Pressure drop and infiltration tests performed by Air-Ins Laboratories on a 48" x 48" damper section, in accordance with the AMCA 500 standard.

TROLEC DAMPER MAINTENANCE

When dampers are exposed to harsh worksite elements such as cement dust, it is sometimes necessary to lubricate the moving parts for maximum performance.

We recommend a penetrating lubricant such as Aerochem's MX-EP, which we use during the assembly process.

Trolec products are always carefully inspected before shipping. However, appropriate measures should be taken in the field to ensure maximum performance.

Trolec may not be held liable for any damage resulting from misuse of its products or inadequate installation.

Trolec reserves the right to modify these specifications without notice.