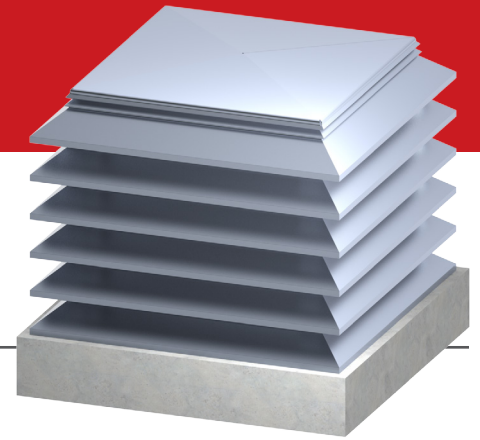


PMW (25 000 TO 60 000 CFM)

PENTHOUSE MITERED CORNERS



STANDARD CONSTRUCTION

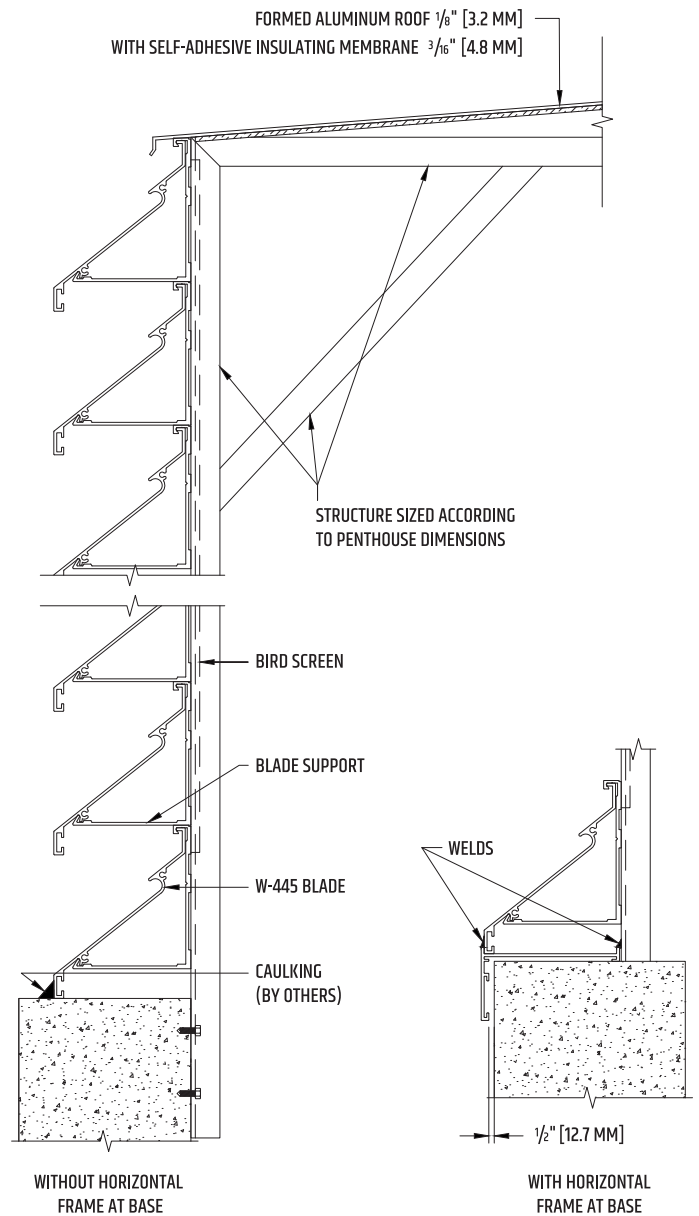
| | |
|---------------------|---|
| BLADES | W-445 |
| CORNERS | ALUMINUM ANGLE |
| ROOF | FORMED ALUMINUM 1/8" (3.2 MM) |
| ROOF SUPPORT | STRUCTURE SIZED ACCORDING TO PENTHOUSE DIMENSIONS |
| ROOF INSULATION | SELF-ADHESIVE MEMBRANE 3/16" (4.8 MM) |
| FINISH | MILL |
| EXTERNAL DIMENSIONS | MIN. 60" (1 524 MM) X 60" (1 524 MM) X 60" (1 524 MM) |
| | MAX. 96" (2 438 MM) X 96" (2 438 MM) X 96" (2 438 MM) |

AVAILABLE OPTIONS

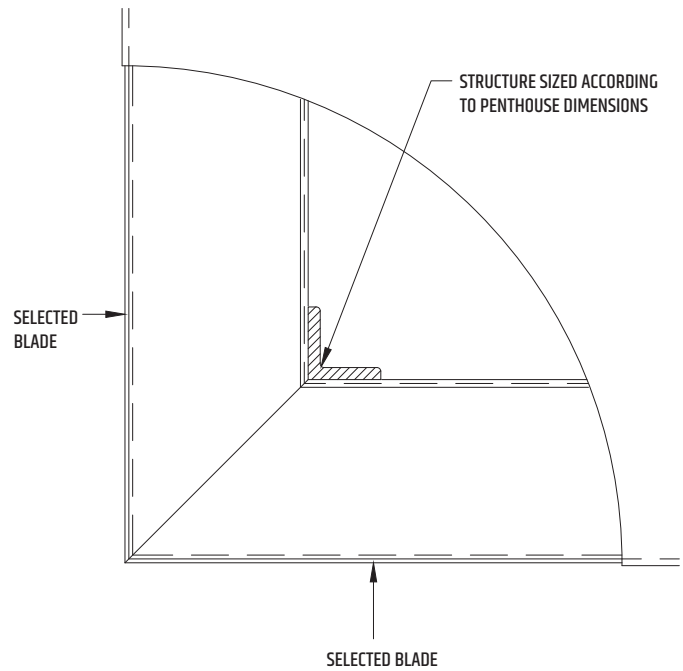
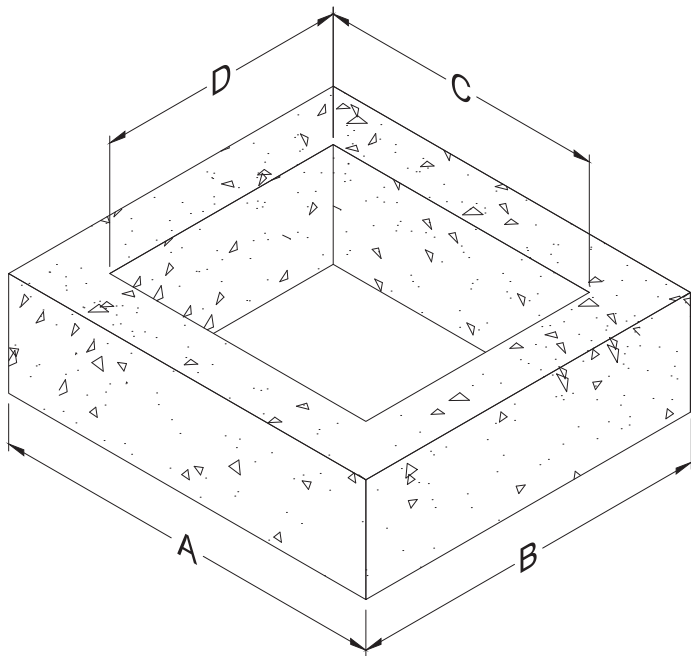
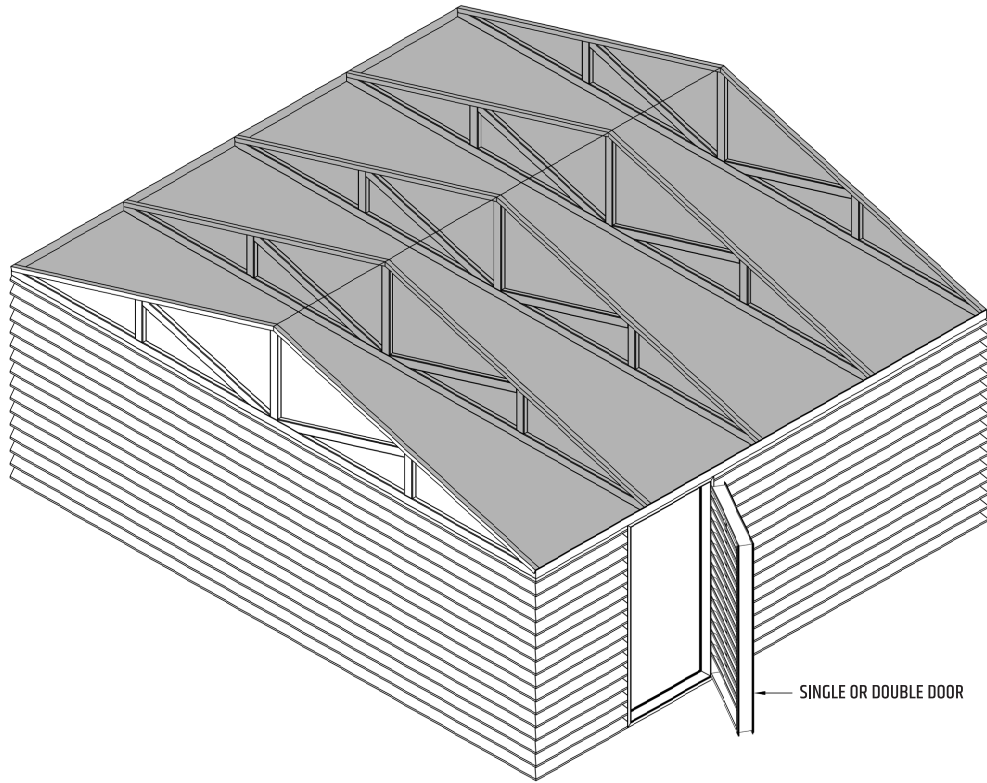
| | |
|-------------------|-------------------------------------|
| BLADES | W-245 / Z-245 |
| | W-430 / Z-430 |
| | Z-445 |
| | W-445 1/8" (3.2 MM) |
| | W-645 / Z-645 |
| CONFIGURATION | TWO SIDES |
| | THREE SIDES |
| CONSTRUCTION | MODULAR |
| ROOF | REMOVABLE, BOLTED |
| | REMOVABLE, MOUNTED ON HINGES |
| ACCESS PANEL | CONCEALED |
| DOOR | MOUNTED ON HINGES WITH PADLOCK HASP |
| | MOUNTED ON HINGES WITH MORTISE LOCK |
| BLANK-OFF PANELS | NON INSULATED |
| | INSULATED |
| FILTER SUPPORT | 1" (25.4 MM) |
| | 2" (50.8 MM) |
| INTERNAL DIVIDERS | NON INSULATED |
| | INSULATED |
| FLOOR | SCREEN |
| | INSULATED |

FINISHES AVAILABLE

| | |
|----------|--|
| ANODIZED | CLEAR |
| | COLOR |
| PAINT | LECHLER ISOLACK (5-YEAR WARRANTY) |
| | DURANAR OR INTERPON D 2000 (20-YEAR WARRANTY) |
| | DURANAR XL OR INTERPON D 3000 (30-YEAR WARRANTY) |



PMW (25 000 TO 60 000 CFM)



NOTE : Dimensions A, B, C and D need to be specified when ordering.
Trolec will determine the necessary assembly clearances.

Trolec reserves the right to modify these specifications without notice.