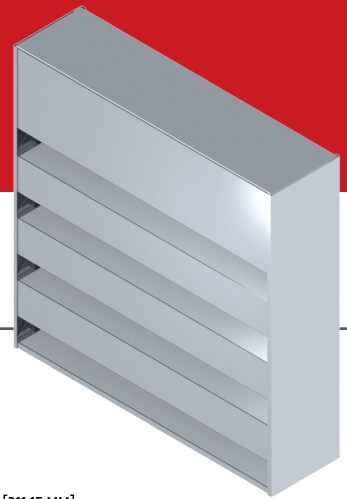


PAC-1245

12" ACOUSTIC LOUVER



STANDARD CONSTRUCTION

FRAME	FORMED ALUMINUM 0.102" (2.6 MM)
BLADES	FORMED ALUMINUM 0.102" (2.6 MM)
BLADE ANGLE	45°
BLADE FASTENING	RIVETED TO FRAME
ACOUSTIC INSULATION	STONE WOOL (ROXUL AFB) HELD IN PLACE WITH A SHEET OF 20 GA PERFORATED GALVANIZED STEEL, 33% OPEN AREA
BIRD SCREEN	EXPANDED ALUMINUM 1/2" - 081F (12.7 MM)
FINISH	MILL
WEIGHT	10 LB/FT ² (48.8 KG/M ²)
SINGLE SECTION	MIN. 24" (610 MM) X 30" (762 MM) MAX. 72" (1 829 MM) X 120" (3 048 MM)

PERFORMANCE: 48" X 48" SECTION

FREE AREA	4.17 FT ² (0.387 M ²)
PERCENTAGE OF FREE AREA	26%
BEGINNING POINT OF WATER PENETRATION	1 330 FT/MIN (6.76 M/S)
PRESSURE DROP AT BEGINNING POINT OF WATER PENETRATION	0.14" W.G. (34.9 PA)

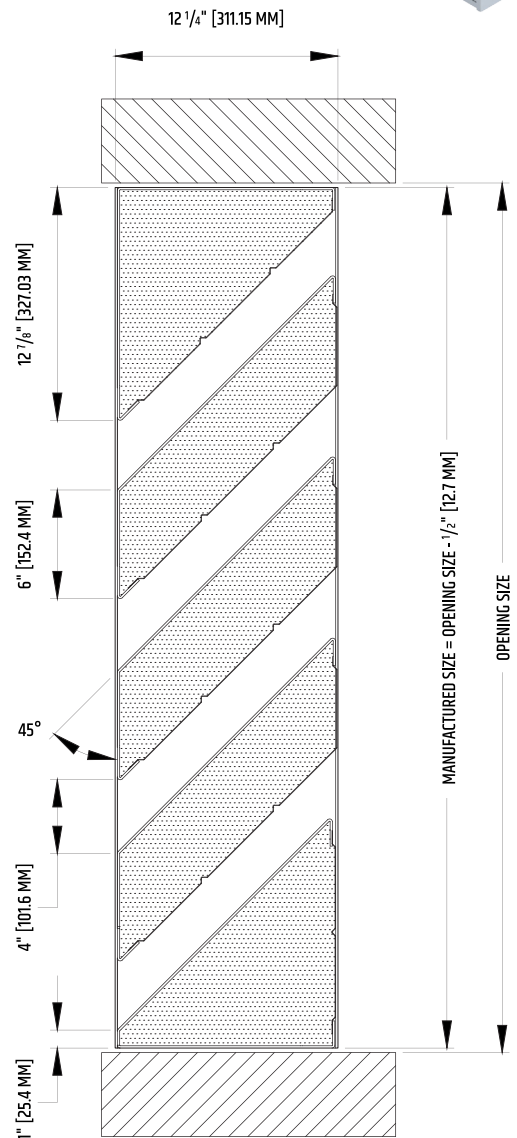
NOTE: Louvers tested with bird screen installed

AVAILABLE OPTIONS

TYPE OF CONSTRUCTION	GALVANIZED STEEL
	STAINLESS STEEL
	MODULAR
	GEOMETRIC SHAPES
BIRD SCREEN	GALVANIZED 1/4" X 1/4" (6.35 MM X 6.35 MM)
	GALVANIZED 1" X 1" (25.4 MM X 25.4 MM)
	EXPANDED ALUMINUM 1/2" - 051F (12.7 MM)
INSECT SCREEN	FASTENED
	REMOVABLE
BLANK-OFF PANEL	NON INSULATED
	INSULATED AND FASTENED (WITH THERMAL BARRIER)
	INSULATED AND REMOVABLE (WITH THERMAL BARRIER)
FILTER SUPPORT	1" (25.4 MM)
	2" (50.8 MM)

FINISHES AVAILABLE

ANODIZED	CLEAR
	COLOR
PAINT	LECHLER ISOLACK (5-YEAR WARRANTY)
	DURANAR OR INTERPON D 2000 (20-YEAR WARRANTY)
	DURANAR XL OR INTERPON D 3000 (30-YEAR WARRANTY)

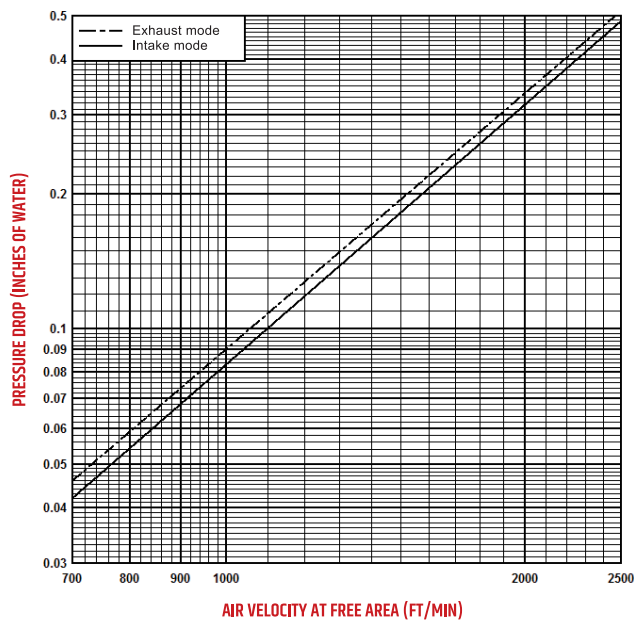


NORMALIZED NOISE REDUCTION AND SOUND TRANSMISSION CLASS (STC)

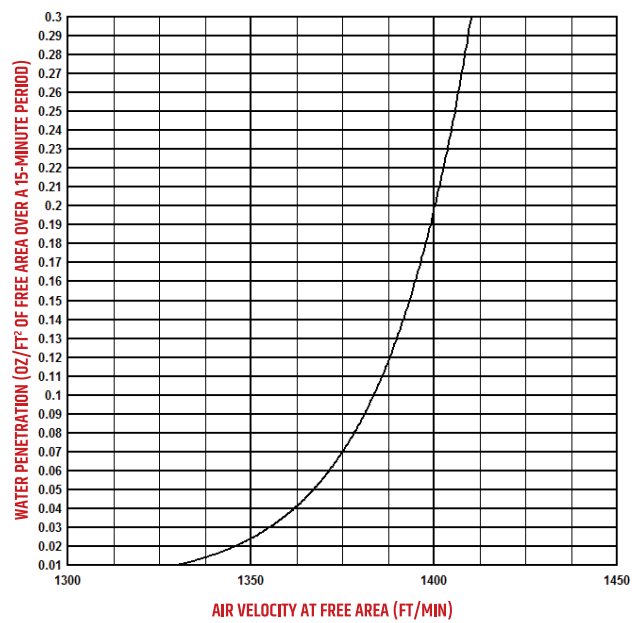
FREQUENCY (HZ)	125	250	500	1 000	2 000	4 000	STC
NOISE REDUCTION (DB)	8	16	22	28	29	25	19

PAC-1245

PRESSURE DROP VS AIR VELOCITY
12" ACOUSTIC MODEL



WATER PENETRATION
12" ACOUSTIC MODEL
BEGINNING POINT OF WATER PENETRATION AT 1330 FT/MIN



- NOTES:
- > Tests performed by Intertek, an independent acoustic laboratory.
 - > Acoustic tests performed with a standard aluminum acoustic louver. Results may vary depending on the material used to build the acoustic louver.
 - > Water penetration and pressure drop tests performed by Air-Ins Laboratories, in accordance with the AMCA 500 standard.

Trolec reserves the right to modify these specifications without notice.