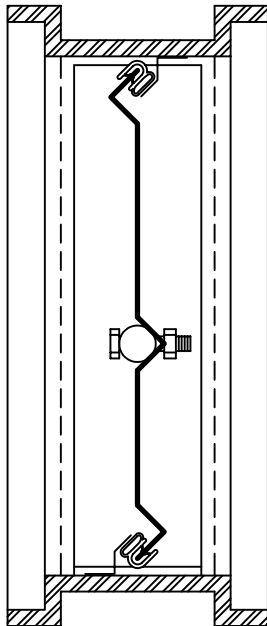


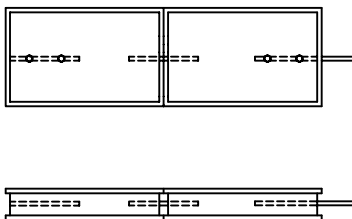
HEAVY DUTY STEEL DAMPER

V90SB-HV

V90SB SINGLE BLADE



Multiple sections



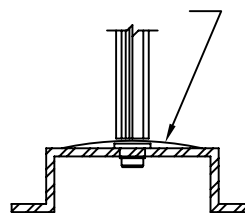
SPECIFICATIONS

MODEL	V90SB-HV	6" Minimal Height
FRAME	GALVANIZED STEEL	
WIDTH	15,2cm (6") Min.	122cm (48") Max.
HEIGHT	15,2cm (6") Min.	35,6cm (14") Max.
GAGE	11 GA	
BLADE	GALVANIZED STEEL	
WIDTH	15,2cm (6") Min.	122cm (48") Max.
HEIGHT	10,6cm (4,19") Min.	35,6cm (14") Max.
ROD	SLIDE PIN (C.R.S) 1/2" ZINC PLATED - DOUBLE BOLTING	
DRIVE PIN	COLD ROLLED STEEL - ZINC PLATED	
GAGE	11 GA	
STANDARD BEARINGS	SELF-LUBRIFICATION NYLON FLANGE BUSHINGS	
STOPPER	STEEL	
ACCESSORIES	ZINC PLATED	

OPTIONS

FRAME	FLANGE	<input type="checkbox"/>
BEARINGS	BRONZE FLANGE BUSHINGS	<input type="checkbox"/>
	BALL BEARINGS	<input type="checkbox"/>
ISOLATION	ARMAFLEX 1/2"	<input type="checkbox"/>
PAINTING	ACRYTHANE SICO	<input type="checkbox"/>

Weather strips - FRAME
STAINLESS STEEL SPRING



Weather strips -BLADE
TIGHT DAMPER (212 °F / 100 °C)
EXTRUDED E.P.D.M RIGID
AND SEMI RIGID MOULDING



TYPE	A	B	C
V90SB	3 1/2" (8,9 cm)	2 1/2" (6,35 cm)	9/16" (1,43 cm)

trolec
INC

4700, Rue Thibault
Ville de St-Hubert, Québec J3Y 0A8

Tel.: (450) 656-2610

Fax : (514) 525-1912

E-mail : admin@trolec.com

Toll free : 1-888-656-2610

Toll free : 1-888-305-1912

Web Site : trolec.com

SUBMITTED BY :

DATE :

APPROVED BY :

No :

